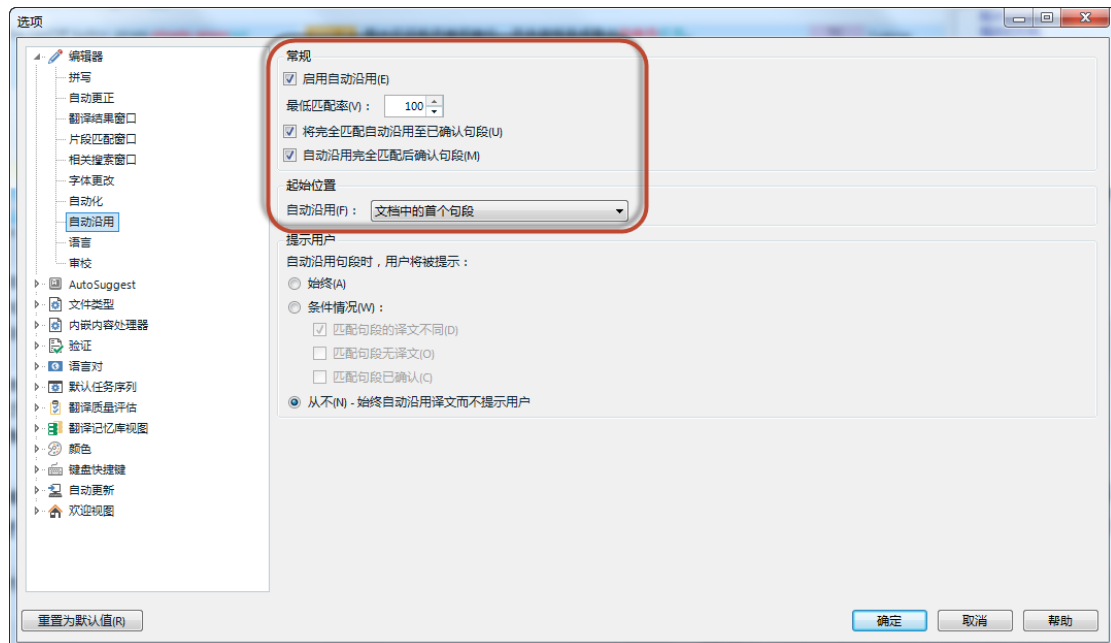
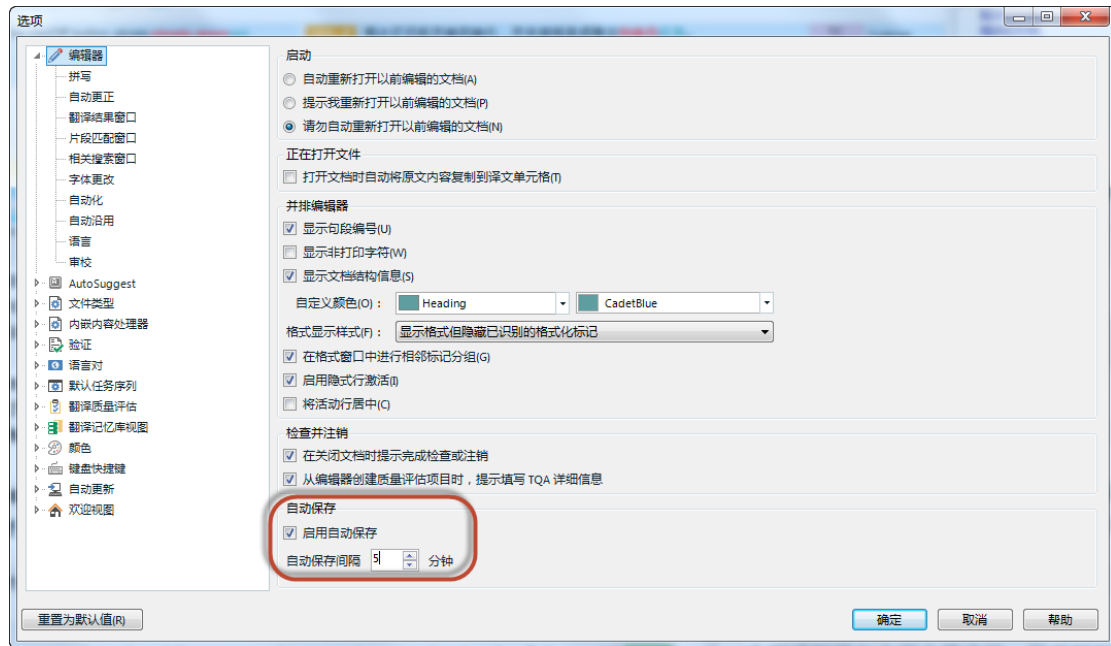


Trados 软件的初始配置

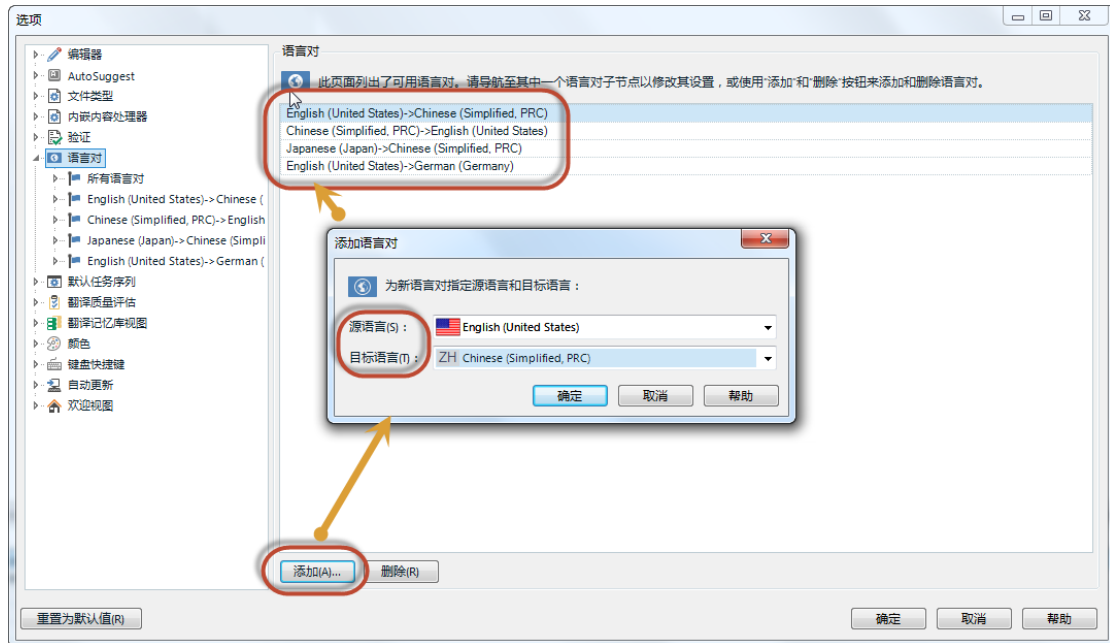
SDL|吴振国

打开 Trados 软件，一次点击菜单“文件”-“选项”：

1. 软件的编辑器设置

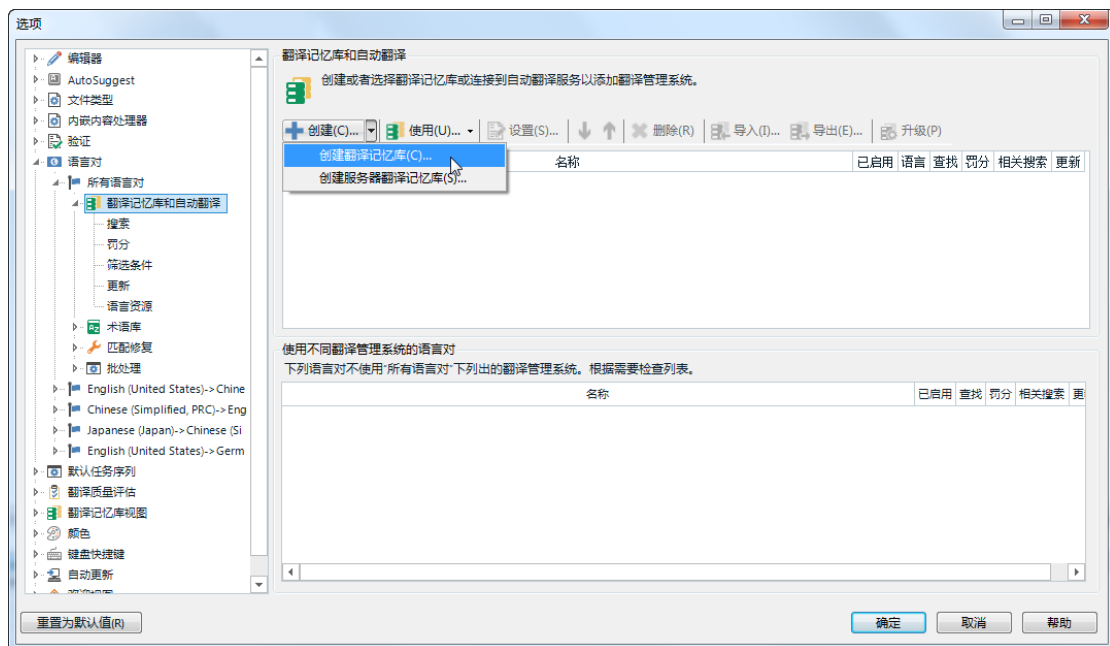


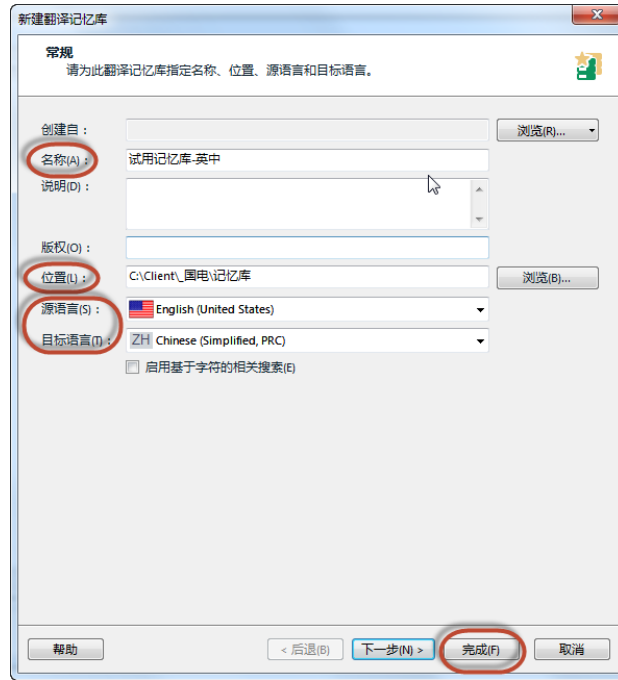
2. 添加您日常翻译工作所涉及的语言方向（中译英、英译中等）：



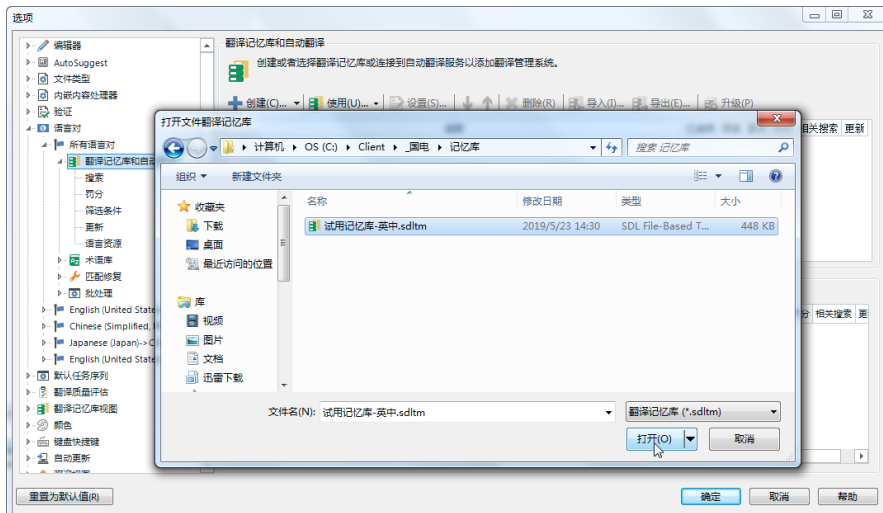
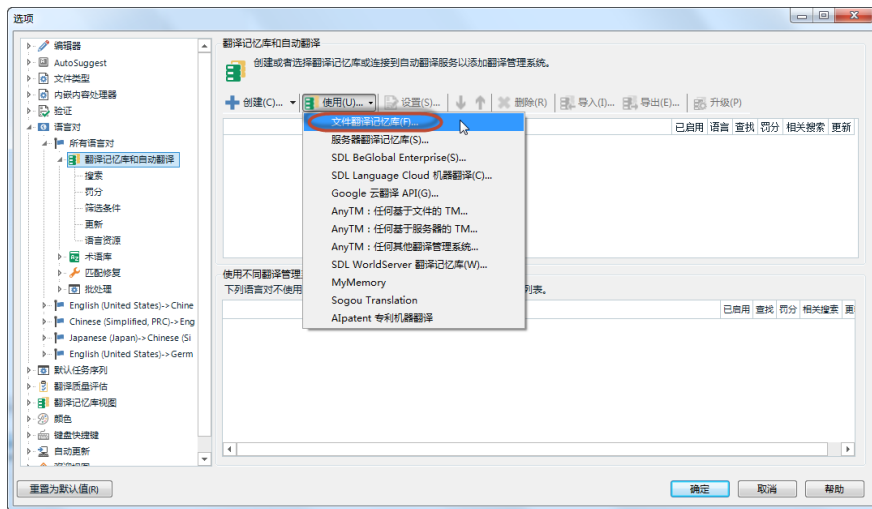
3. 创建或使用您本地的翻译记忆库（可以添加多个）

◆ 创建一个新记忆库：

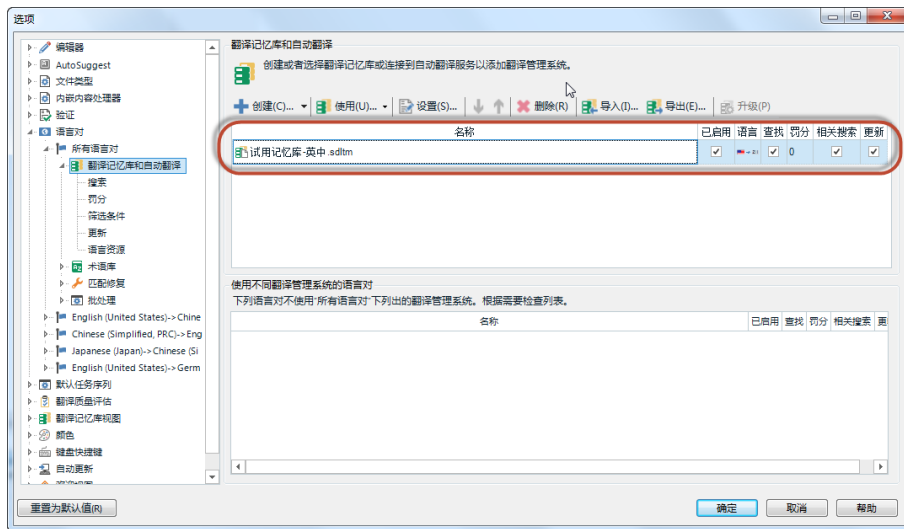




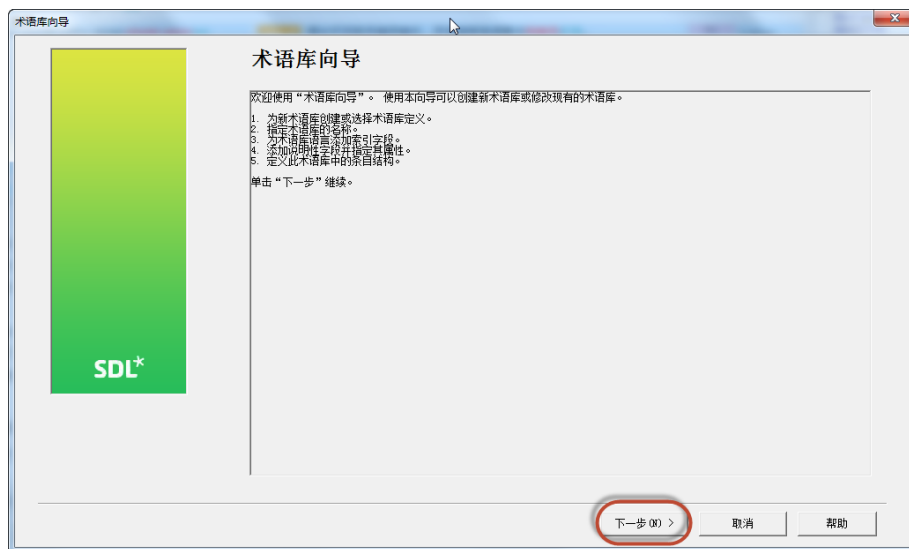
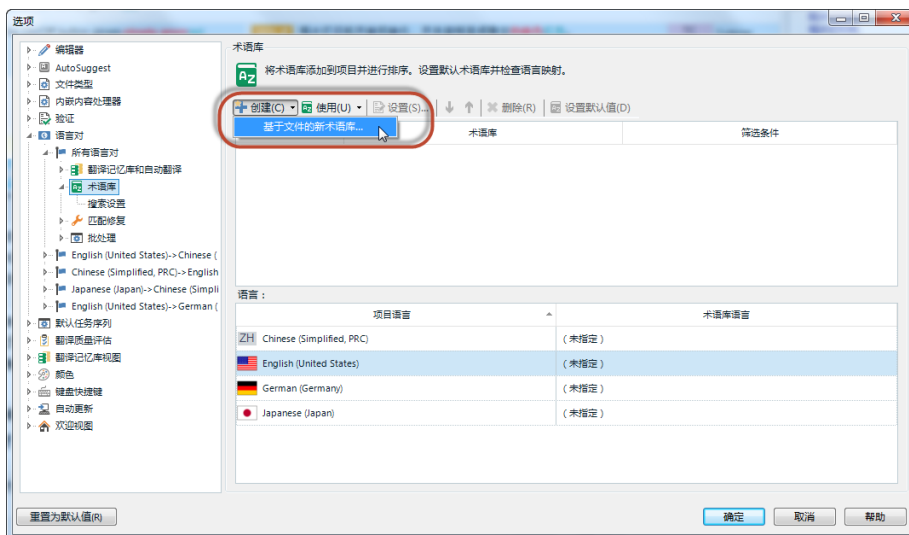
◆ 加载一个现有的记忆库:

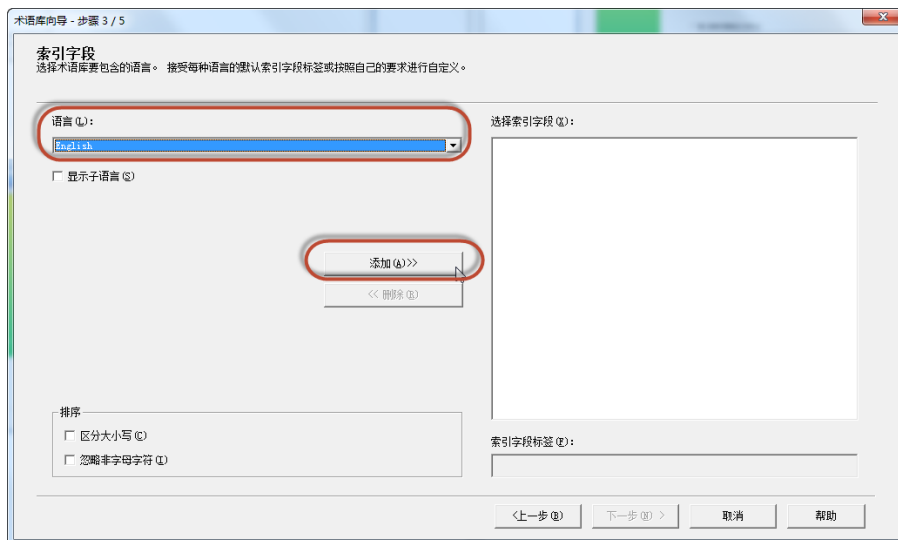
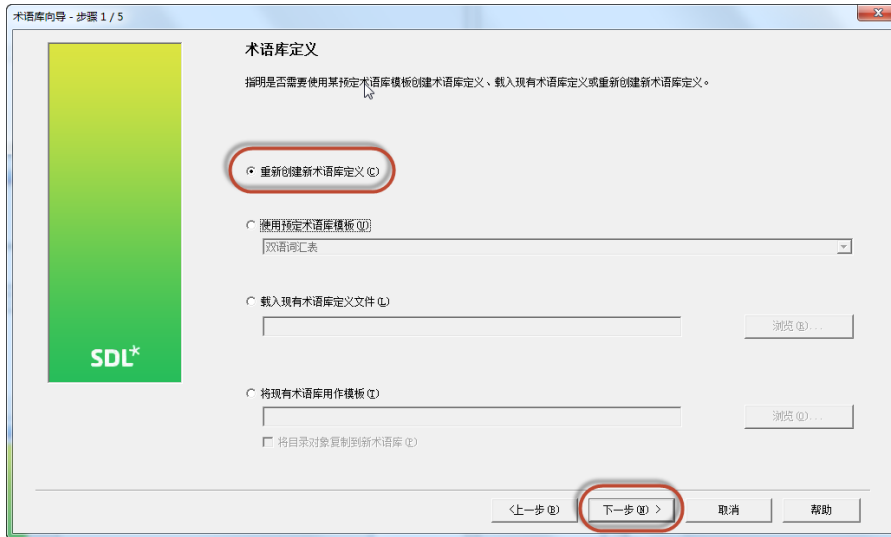


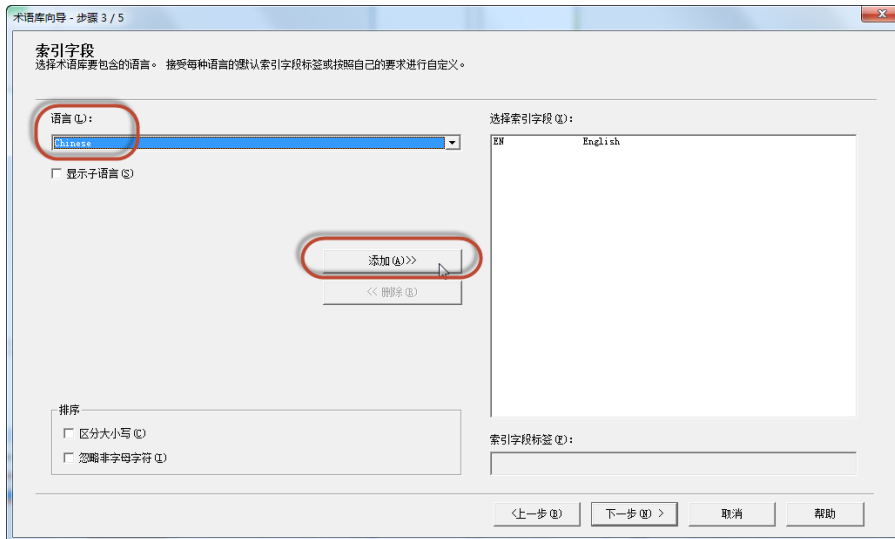
◆ 创建成功或加载成功后的显示效果：

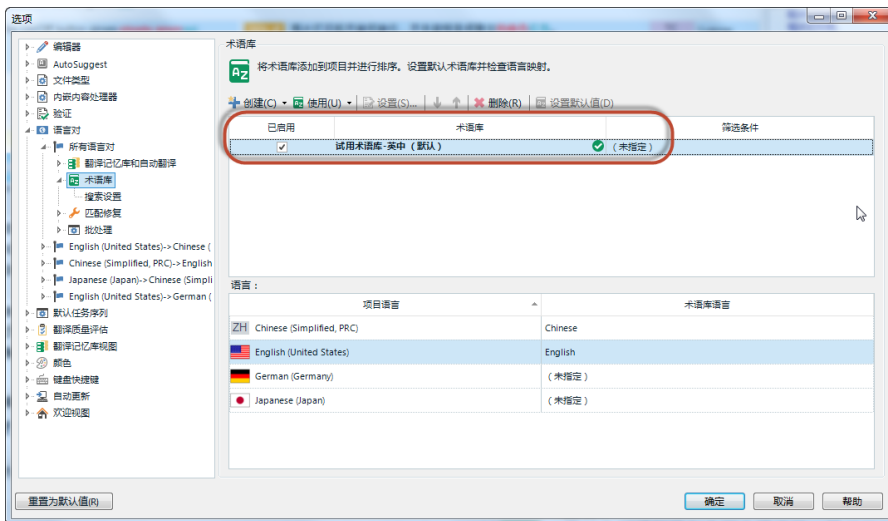


4. 创建一个您本地的术语库（可以添加多个）

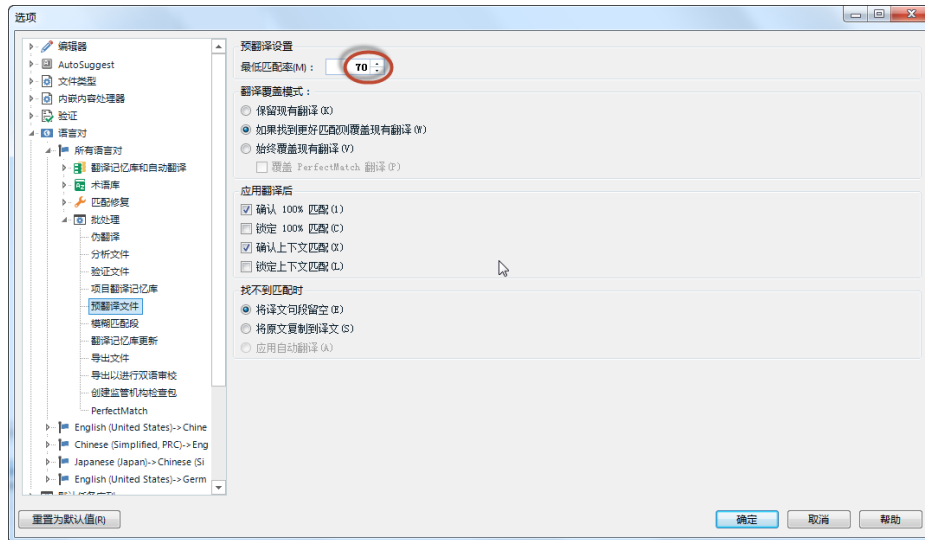




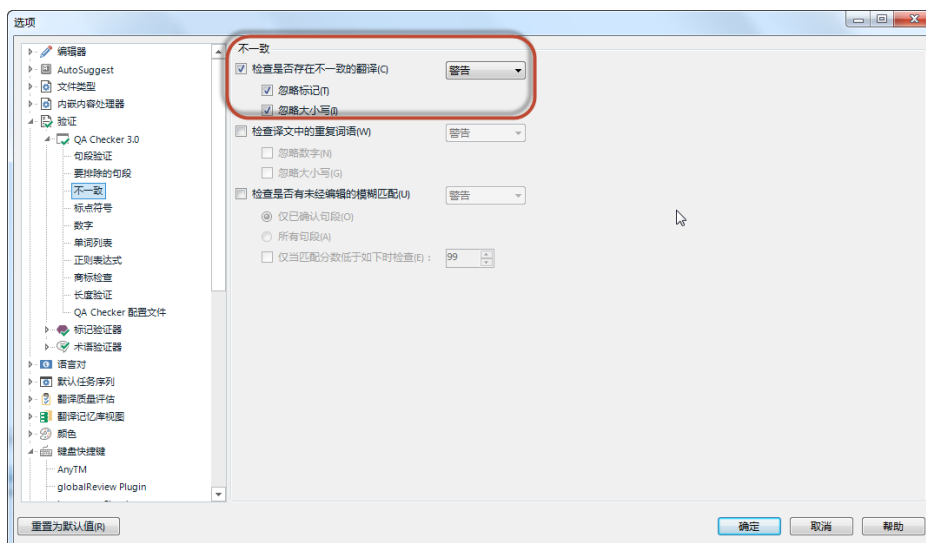
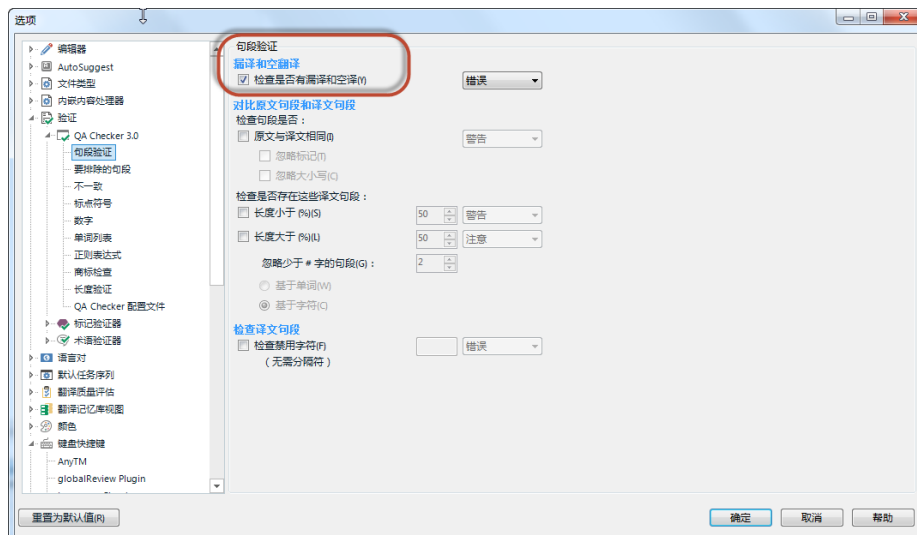


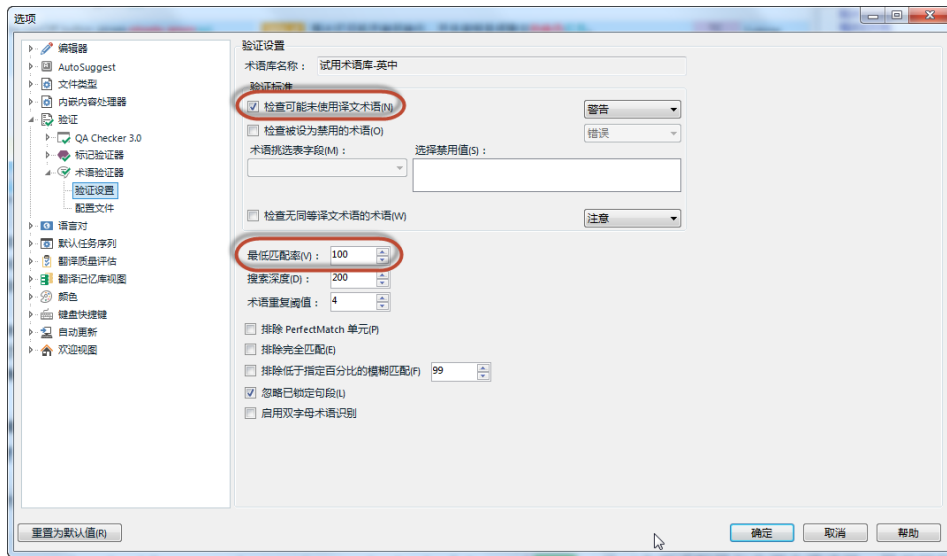
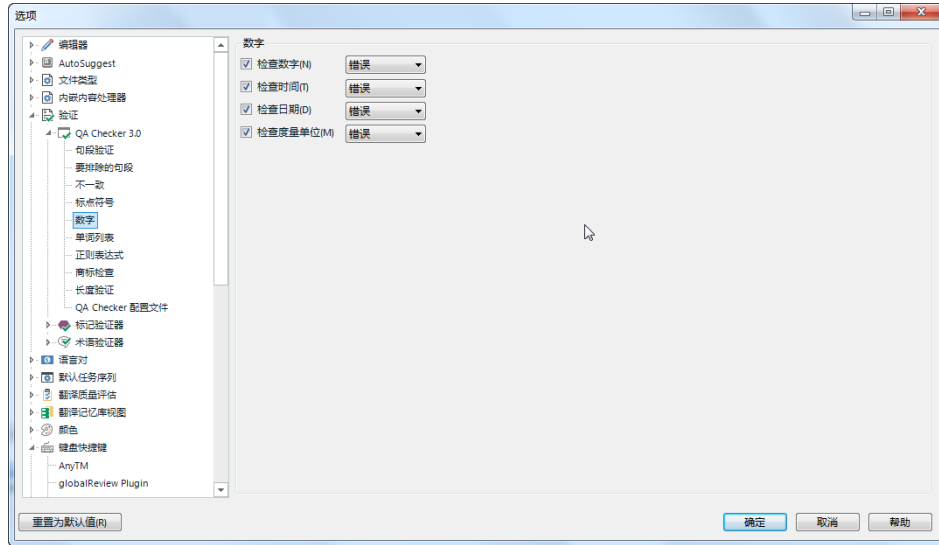


5. 批处理选项



6. 设置 QA 质量检查





7. 关闭“自动更新”可以让您的软件启动更加迅速

